

# Individual emotion banner slider for the shopping worlds (banner with freely definable texts etc.)

digitalwert® - Agentur für digitale Wertschöpfung GmbH

verantwortlich: christian scheibe (führung digitaler wertschöpfungsprozesse)

ostra-allee 35 \_ 01067 Dresden

FN: [ 0351 ] 417 54 800

FX: [ 0351 ] 417 54 801

[christian.scheibe@digitalwert.de](mailto:christian.scheibe@digitalwert.de)

## table of contents

1. Installation guide .....	3
2. snippets .....	3
3. own shopware blocks.....	7
4. fixes.....	8
4.1. the emotion banner sliders are not displayed in the front-end of the online shop.....	8
4.2. After placing the shopping world element in the shopping world, the element can not be opened (for example, by double-clicking) .....	11
4.3. the plugin can not be installed, enabled or updated .....	13
4.4. A mixed content message appears in the frontend of the online shop.....	13
4.5. change the urls of the background images, for example, when changing the domain ....	13

## 1. Installation guide

Install the plugin via the plugin manager and make your desired settings in the plugin configuration. Then empty the cache of the shop and log in to the shopware backend if necessary.

**When you reinstall the plugin please note:** when you reinstall a plugin, all previous values of the fields in the plugin configuration and above all the collected values are automatically deleted. So please create a backup copy of the database table `s_core_emotionbannersliderelement` before this action.

## 2. snippets

snippet name	description
EmotionbannersliderelementListBatchProcessing	the name of the window in the batch process
EmotionbannersliderelementListBatchProcessingText	the text for the loop in the batch process
EmotionbannersliderelementListBatchProcessingInfo TextHeadline	the text for the headline in the batch process
EmotionbannersliderelementListBatchProcessingInfo Text1	the first information text in the batch process
EmotionbannersliderelementListBatchProcessingInfo Text2	the second information text in the batch process
EmotionbannersliderelementWindowTitle	the name of the window in the list view
EmotionbannersliderelementListName	the column label of the name of the banner element in the list view
EmotionbannersliderelementListTextbox1active	the column label of the active status of the text box 1 in the list view
EmotionbannersliderelementListTextbox2active	the column label of the active status of the text box 2 in the list view
EmotionbannersliderelementListTextbox3active	the column label of the active status of the text box 3 in the list view

EmotionbannerslidererelementListTextbox4active	the column label of the active status of the text box 4 in the list view
EmotionbannerslidererelementListToolBarButtonCopy	the button „copy selected entries“
EmotionbannerslidererelementDetailWindowTitleEdit	the name of the window in the detail view
EmotionbannerslidererelementDetailTitle	the name of the area in the detail view
EmotionbannerslidererelementDetailFieldsetTitleGeneral	the name of the first field set in the detail view
EmotionbannerslidererelementDetailName	the name of the input field for the name of the banner slider element
EmotionbannerslidererelementDetailCssclass	the name of the input field for the individual css class of the banner element
EmotionbannerslidererelementDetailFieldsetTitleBackground	the name of the second field set in the detail view
EmotionbannerslidererelementDetailBackgroundtype	the name of the select field for the background type
EmotionbannerslidererelementDetailBackgroundimage	the name of the media select field for the background image
EmotionbannerslidererelementDetailBackgroundposition	the name of the select field for the background position
EmotionbannerslidererelementDetailBackgroundsize	the name of the select field for the background size
EmotionbannerslidererelementDetailBackgroundcolor	the name of the input field for the background color in hex code
EmotionbannerslidererelementDetailBorderradiusactive	the name of the checkbox field for the activation of the round corners
EmotionbannerslidererelementDetailBorderradius	the name of the input field for the individual round corners in pixels
EmotionbannerslidererelementDetailFieldsetTitleTextbox1	the name of the third field set in the detail view
EmotionbannerslidererelementDetailTextbox1active	the name of the checkbox field for the active status of the text box 1

EmotionbannerslidererelementDetailTextbox1fullsize	the name of the checkbox field for the full size status of the text box 1
EmotionbannerslidererelementDetailTextbox1position vertical	the name of the select field for the vertical position of the text box 1
EmotionbannerslidererelementDetailTextbox1margin top	the name of the input field for the outer distance in pixels for the vertical position of the text box 1
EmotionbannerslidererelementDetailTextbox1position horizontal	the name of the select field for the horizontal position of the text box 1
EmotionbannerslidererelementDetailTextbox1margin left	the name of the input field for the outer distance in pixels for the horizontal position of the text box 1
EmotionbannerslidererelementDetailTextbox1padding	the name of the input field for the inner distance of the text box 1
EmotionbannerslidererelementDetailTextbox1background color	the name of the input field for the background color as hex code of the text box 1
EmotionbannerslidererelementDetailTextbox1background colorhover	the name of the input field for the hover background color as hex code of the text box 1
EmotionbannerslidererelementDetailTextbox1fontcolor	the name of the input field for the font color as hex code of the text box 1
EmotionbannerslidererelementDetailTextbox1fontcolor hover	the name of the input field for the hover font color as hex code of the text box 1
EmotionbannerslidererelementDetailTextbox1width format	the name of the select field for the width format of the text box 1
EmotionbannerslidererelementDetailTextbox1width	the name of the input field for the width of the text box 1
EmotionbannerslidererelementDetailTextbox1border radius active	the name of the checkbox field for the activation of the round corners of the text box 1
EmotionbannerslidererelementDetailTextbox1border radius	the name of the input field for the round corners in pixels of the text box 1
EmotionbannerslidererelementDetailTextbox1	the name of the input field for the content of the text box 1
...	...

EmotionbannerslidererelementDetailFieldsetTitleText box4	the name of the sixth field set in the detail view
EmotionbannerslidererelementDetailTextbox4active	the name of the checkbox field for the active status of the text box 4
EmotionbannerslidererelementDetailTextbox4fullsize	the name of the checkbox field for the full size status of the text box 4
EmotionbannerslidererelementDetailTextbox4positio n vertical	the name of the select field for the vertical position of the text box 4
EmotionbannerslidererelementDetailTextbox4margin top	the name of the input field for the outer distance in pixels for the vertical position of the text box 4
EmotionbannerslidererelementDetailTextbox4positio n horizontal	the name of the select field for the horizontal position of the text box 4
EmotionbannerslidererelementDetailTextbox4margin left	the name of the input field for the outer distance in pixels for the horizontal position of the text box 4
EmotionbannerslidererelementDetailTextbox4padding	the name of the input field for the inner distance of the text box 4
EmotionbannerslidererelementDetailTextbox4backgr ound color	the name of the input field for the background color as hex code of the text box 4
EmotionbannerslidererelementDetailTextbox4backgr ound colorhover	the name of the input field for the hover background color as hex code of the text box 4
EmotionbannerslidererelementDetailTextbox4fontcol or	the name of the input field for the font color as hex code of the text box 4
EmotionbannerslidererelementDetailTextbox4fontcol or hover	the name of the input field for the hover font color as hex code of the text box 4
EmotionbannerslidererelementDetailTextbox4widthf ormat	the name of the select field for the width format of the text box 4
EmotionbannerslidererelementDetailTextbox4width	the name of the input field for the width of the text box 4
EmotionbannerslidererelementDetailTextbox4border radius active	the name of the checkbox field for the activation of the round corners of the text box 4

EmotionbannerslidererelementDetailTextbox4border radius	the name of the input field for the round corners in pixels of the text box 4
EmotionbannerslidererelementDetailTextbox4	the name of the input field for the content of the text box 4
EmotionbannerslidererelementDetailFieldsetTitleLink	the name of the seventh field set in the detail view
EmotionbannerslidererelementDetailCompletelinking	the name of the checkbox field for the complete linking of the banner
EmotionbannerslidererelementDetailLinktarget	the name of the checkbox field for the activation of the opening of the link in a new window
EmotionbannerslidererelementDetailLink	the name of the input field for the link (url)
EmotionbannerslidererelementDetailLinktitle	the name of the input field for the title of the link
EmotionbannerslidererelementDetailLinktitlenotext	the name of the checkbox field for using the title of the link as link text for a linked banner without text

### 3. own shopware blocks

In order to make update-safe adjustments to the plugin in your own theme, you must save the file **individual\_emotion\_banner.tpl** in the directory „**EIGENES\_THEME/ widgets/emotion/components**“ and then make your own customizations using the following plugin shopware blocks (at the beginning of the file must stand `{extends file="parent:widgets/emotion/components/individual_emotion_banner_slider.tpl"}` ):

```
{block name='widget_individual_emotion_banner_slider'} ... {/block}
{block name='widget_individual_emotion_banner_slider_container'} ... {/block}
{block name='widget_individual_emotion_banner_slider_slide'} ... {/block}
{block name='widget_individual_emotion_banner_slider_slide_inner'} ... {/block}
{block name='widget_individual_emotion_banner_slider_bannerslideritem'} ... {/block}
{block name='widget_individual_emotion_banner_slider_bannerslideritem_banner'} ... {/block}
{block name='widget_individual_emotion_banner_slider_bannerslideritem_style'} ... {/block}
```

```
{block name='widget_individual_emotion_banner_slider_bannerslideritem_style_inner'} ... {/
block}

{block name='widget_individual_emotion_banner_slider_bannerslideritem_element'} ... {/block}

{block
name='widget_individual_emotion_banner_slider_bannerslideritem_element_backgroundcontaine
r'} ... {/block}

{block
name='widget_individual_emotion_banner_slider_bannerslideritem_element_textcontainer1'} ...
{/block}

{block
name='widget_individual_emotion_banner_slider_bannerslideritem_element_textcontainer2'} ...
{/block}

{block
name='widget_individual_emotion_banner_slider_bannerslideritem_element_textcontainer3'} ...
{/block}

{block
name='widget_individual_emotion_banner_slider_bannerslideritem_element_textcontainer4'} ...
{/block}

{block name='widget_individual_emotion_banner_slider_bannerslideritem_bannersliderlink'} ... {/
block}
```

## 4. fixes

### 4.1. the emotion banner sliders are not displayed in the front-end of the online shop

In the event that the emotion banner sliders are not displayed in the front-end of the online shop, the following points can be the cause:

(1). After installing and activating the plugin, you have not emptied the complete shop cache (including theme and backend cache).



Performance \_ □ ×

Start Cache Einstellungen

Erfahre Genaueres über das Performance-Modul in unserer [Dokumentation](#).

Cache-Verzeichnis Informationen

Name	Backend	Verzeichnis	Dateien	Größe	Freier Speicher	Meldung
Shopware configuration	Apcu		1029	1.17 MB	30.76 MB	✓
Http-Reverse-Proxy	shopware="ESV1.0", ...	var/cache/production_201708...	190	1.84 MB	16.97 GB	✓
Shopware templates		var/cache/production_201708...	838	11.28 MB	16.97 GB	✓
Shopware theme		web/cache/	10	4.14 MB	16.97 GB	✓
Shopware Proxies		var/cache/production_201708...	58	401.91 KB	16.97 GB	✓
Doctrine Proxies		var/cache/production_201708...	14	217.93 KB	16.97 GB	✓
Zend OPcache			1772	38.86 MB	25.14 MB	✓

Neu laden

Welche Bereiche sollen geleert werden?

Shopware Konfiguration  
*Cache für Einstellungen / Snippets etc.*

Template-Cache  
*Cache für kompilierte Templates Dateien*

Themes kompilieren  
*Kompiliert die Theme Dateien*

Http-Proxy-Cache  
*Cache für HTTP-Reverse-Proxy, falls aktiv*

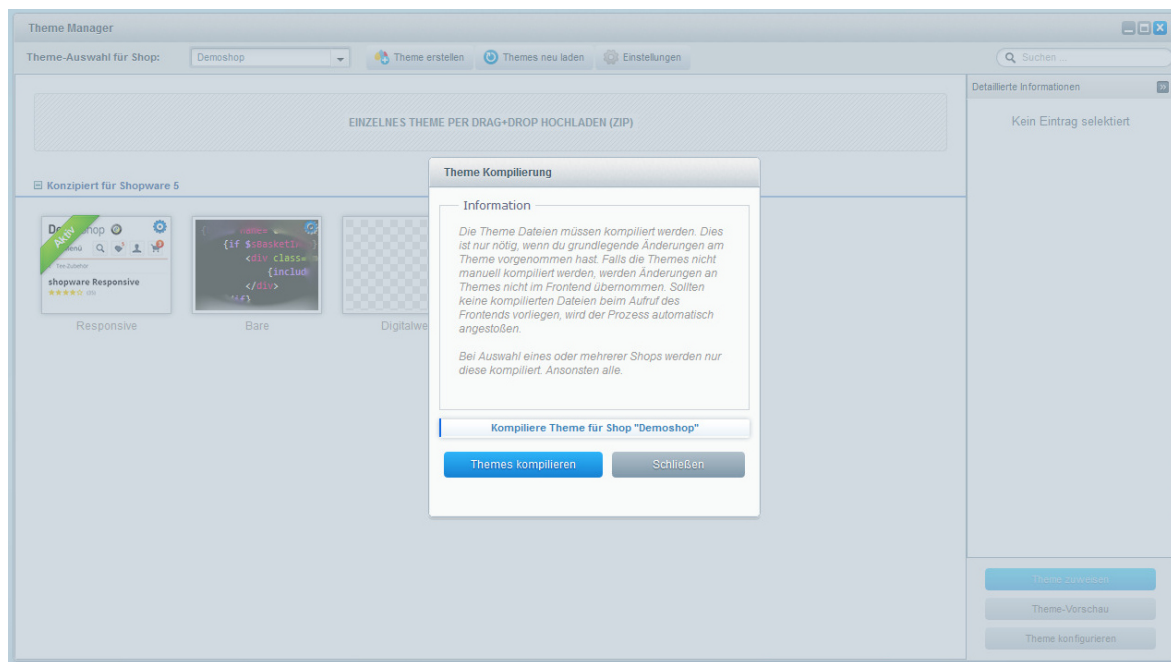
Proxies und Meta-Daten  
*Cache für Proxy-Objekte*

Cache Suchfunktion  
*Cache für Suchergebnisse und Index*

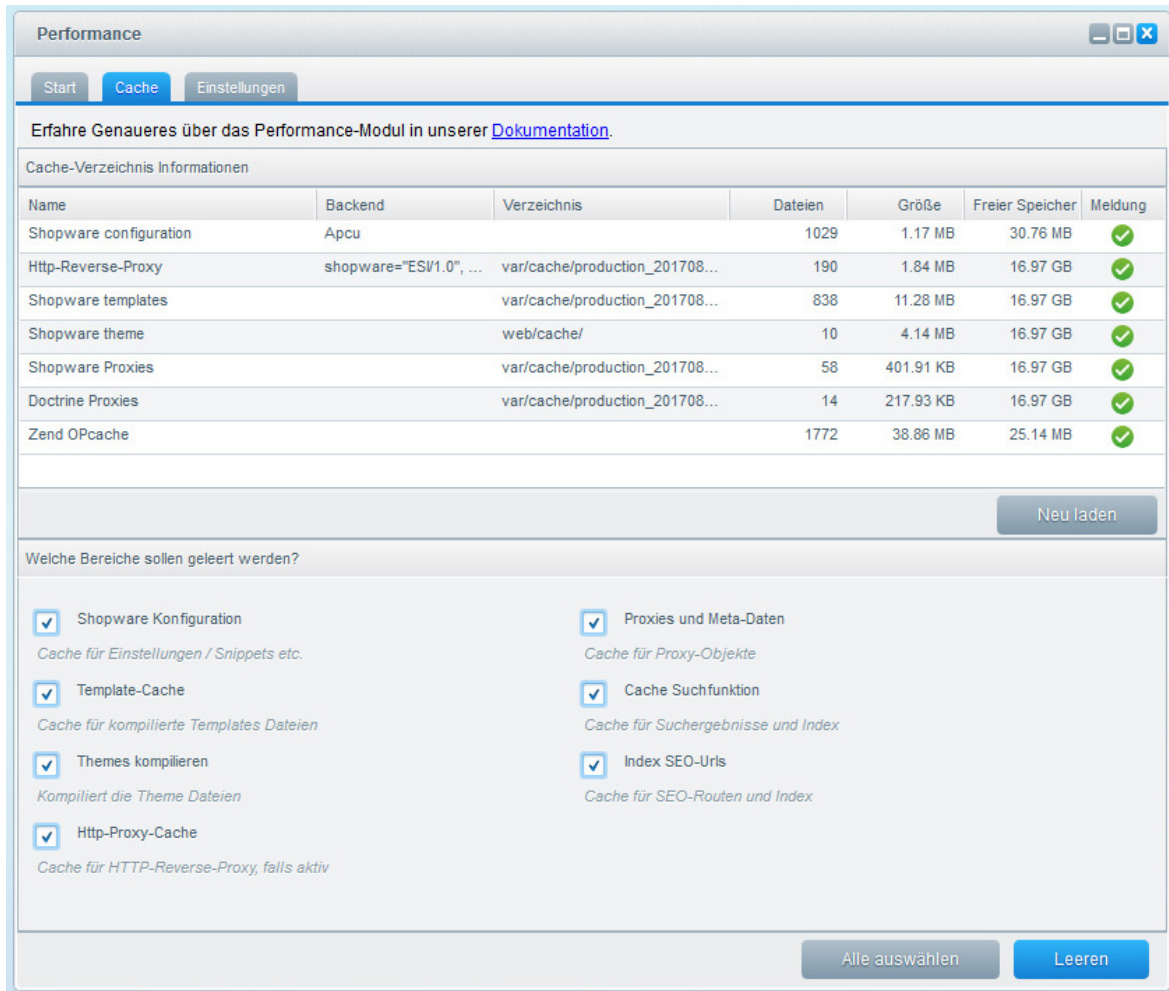
Index SEO-Urls  
*Cache für SEO-Routen und Index*

Alle auswählen Leeren

(2). An own adaptation in your own theme overwrites the adaptation of the plugin due to the Shopware inheritance (the Shopware inheritance is the following: Bare Theme -> Responsive Theme -> Plugin Theme -> own Theme). You can check this by activating Shopware's Responsive Theme once and then emptying the entire shop cache (including theme and backend cache).



(3). Another Shopware plugin overwrites our plugin customization. You can check this by deactivating the other plugins once and then emptying the entire shop cache (including theme and backend cache)



#### 4.2. After placing the shopping world element in the shopping world, the element can not be opened (for example, by double-clicking)

In the event that after placing the shopping world element in the shopping world, the element can not be opened (for example, by double-clicking), the error lies in the cache of shopware or the browser cache itself.

Proceed as follows:

(1). after installing and activating the plugin, empty the entire shop cache (including theme and backend cache).

Performance

Start Cache Einstellungen

Erfahre Genaueres über das Performance-Modul in unserer [Dokumentation](#).

Cache-Verzeichnis Informationen

Name	Backend	Verzeichnis	Dateien	Größe	Freier Speicher	Meldung
Shopware configuration	Apcu		1029	1.17 MB	30.76 MB	✓
Http-Reverse-Proxy	shopware="ESV1.0", ...	var/cache/production_201708...	190	1.84 MB	16.97 GB	✓
Shopware templates		var/cache/production_201708...	838	11.28 MB	16.97 GB	✓
Shopware theme		web/cache/	10	4.14 MB	16.97 GB	✓
Shopware Proxies		var/cache/production_201708...	58	401.91 KB	16.97 GB	✓
Doctrine Proxies		var/cache/production_201708...	14	217.93 KB	16.97 GB	✓
Zend OPcache			1772	38.86 MB	25.14 MB	✓

Neu laden

Welche Bereiche sollen geleert werden?

- Shopware Konfiguration  
*Cache für Einstellungen / Snippets etc.*
- Template-Cache  
*Cache für kompilierte Templates Dateien*
- Themes kompilieren  
*Kompiliert die Theme Dateien*
- Http-Proxy-Cache  
*Cache für HTTP-Reverse-Proxy, falls aktiv*
- Proxies und Meta-Daten  
*Cache für Proxy-Objekte*
- Cache Suchfunktion  
*Cache für Suchergebnisse und Index*
- Index SEO-Urls  
*Cache für SEO-Routen und Index*

Alle auswählen Leeren

(2). Then empty the browser cache / history of your browser. Mostly you can do this via the burger icon and the menu item "Settings" by either deleting the history or the browser data (this depends on your browser).

(3). Afterwards you only have to re-login in the Shopware backend and the shopping world element should now be easy to open (for example, by double-clicking).

#### 4.3. the plugin can not be installed, enabled or updated

In the event that the plugin can not install, activate or update, we recommend, but also the official Shopware Support, you to **uninstall the Shopware security plugin once** and then try the action again (the installation, activation or Update). After completing the action (installation, activation, or upgrade), you can easily **reinstall and activate the Shopware security plug-in**.

#### 4.4. A mixed content message appears in the frontend of the online shop

In the case that a mixed content message regarding the background images appears in the frontend of the online shop, you should set the option "Remove fixed shop url from the background images" to the value "Yes" within the plugin configuration and then empty the **entire** shop cache, including theme and backend cache.

#### 4.5. change the urls of the background images, for example, when changing the domain

In the event that you change your domain, the urls of the background image must also be changed in this step. To do so, first set the option "**Remove fixed shop url from the background images**" to the value "Yes" within the plugin configuration and then empty the **entire** shop cache, including the topic and backend cache.

Afterwards, you have to move to your database for example via phpMyAdmin and select the database table „ **s\_core\_emotionbannersliderelement** “. Now click on the "SQL" tab and empty the text box "**Execute SQL command (s) in database xxx**" and then insert the following code:

```
UPDATE s_core_emotionbannersliderelement SET backgroundimage = REPLACE(backgroundimage, `http://dev.domain.de/`, `http://domain.de/`)
```

The value <http://dev.domain.de/> stands for the old domain, the value <http://domain.de/> for the new domain. These values should be adjusted accordingly to your old and new domain.

Finally, all you have to do is press the "Ok" button to change the URLs to the new domain.